



Return of the Jedi "Collections" (Royal Guards) Toy Catalog (1983)





They're back in full force, 65 STAR WARS® Action Figures! Fighting for the REBEL ALLIANCE™ or the Empire.

TM, ® & © Lucasfilm Ltd. (LFL) 1983
ALL RIGHTS RESERVED
KENNER PRODUCTS AUTHORIZED USER

17 new Action Figures including heroes and villains from the long awaited STAR WARS Movie, RETURN OF THE JEDI. There's new LUKE SKYWALKER as a JEDI KNIGHT, BIB FORTUNA, SQUID HEAD, KLAATU, REE-YEES, WEEQUAY, BOUSHH, GAMORREAN GUARD and LANDO CALRISSIAN in SKIFF GUARD disguise from the planet TATOOINE. From the planet ENDOR; there are EWOKS, CHIEF CHIRPA and LOGRAY, as well as REBEL COMMANDO and BIKER SCOUT. There are also the EMPEROR'S ROYAL GUARD, GENERAL MADINE, NIEN NUNB and ADMIRAL ACKBAR... 65 Action Figures in all... including favorites DARTH VADER, C-3PO, CHEWBACCA and HAN SOLO.

- | | | |
|--|--|---|
| 1. Luke Skywalker® (Jedi Knight® Outfit) | 23. Bespin™ Security Guard | 43. Luke Skywalker® (Bespin™ Fatigues) |
| 2. Boushh™ | 24. Cloud Car™ Pilot | 44. FX-7® |
| 3. Nien Nunb™ | 25. AT-AT™ Commander | 45. Lando Calrissian™ |
| 4. Emperor's Royal Guard™ | 26. Luke Skywalker® (Hoth™ Battle Gear) | 46. Rebel Soldier™ |
| 5. Ree-Yees™ | 27. Two Onebee (2-1B)® | 47. Boba Fett™ |
| 6. Skiff Guard™ | 28. Rebel Commander™ | 48. Stormtrooper™ |
| 7. Lando Calrissian™ (Skiff Guard™ Disguise) | 29. Han Solo™ (Hoth™ Battle Gear) | 49. Princess Leia Organa® (Bespin™ Gown) |
| 8. Chief Chirpa™ | 30. Princess Leia Organa® (Hoth™ Outfit) | 50. Tusken Raider® (Sand People)® |
| 9. Klaatu™ | 31. Han Solo™ (Bespin™ Outfit) | 51. Artive-Defour (R5-D4)® |
| 10. Rebel Commando™ | 32. Star Destroyer® Commander | 52. Lobot™ |
| 11. Biker Scout™ | 33. AT-AT™ Driver | 53. Death Star® Droid |
| 12. Gamorrean Guard™ | 34. Ugnaught® | 54. Bossk® (Bounty Hunter) |
| 13. Logray™ (Ewok™ Medicine Man) | 35. Yoda, the Jedi Master™ | 55. Luke Skywalker® (X-Wing Fighter® Pilot) |
| 14. Squid Head™ | 36. Dengar® | 56. Walrus Man® |
| 15. Admiral Ackbar™ | 37. Imperial Stormtrooper® (Hoth™ Battle Gear) | 57. Chewbacca® |
| 16. General Madine™ | 38. Imperial Commander™ | 58. Luke Skywalker® |
| 17. Bib Fortuna™ | 39. IG-88® | 59. Princess Leia Organa® |
| 18. Artoo-Detoo (R2-D2)® (with Sensorscope™) | 40. Power Droid™ | 60. Ben (Obi-Wan) Kenobi® |
| 19. See-Threepio (C-3PO)® (with removable limbs) | 41. Han Solo™ | 61. Greedo® |
| 20. 4-LOM™ | 42. Bespin™ Security Guard | 62. Hammerhead® |
| 21. Zuckuss® | | 63. Snaggletooth® |
| | | 64. Jawa® |
| | | 65. Darth Vader® |



STAR WARS VISUAL GUIDES
WWW.JEDITEMPLEARCHIVES.COM



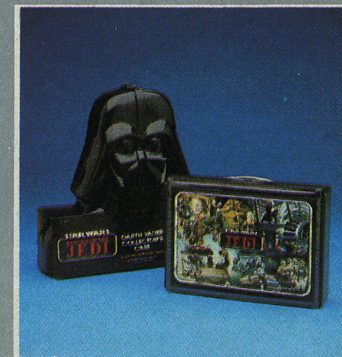
C-3PO® COLLECTOR'S CASE

A shining example of a Collector's Case! Life-size golden sculpting of the world's most popular droid, **C-3PO**. This new **C-3PO** Collector's Case holds up to 40 **STAR WARS** Action Figures plus accessories and includes a pressure-sensitive label sheet to identify them. Close it up and the hidden handle allows a child to carry **C-3PO** anywhere. Action Figures sold separately. Ages 4 and up.



CHEWBACCA® BANDOLIER STRAP

Looks just like the ammunition strap owned by **CHEWIE**. But this one is specially designed for kids, not **WOOKIEES**. It carries 10 Action Figures and has two pouches for accessories and secret messages. It can be worn over the shoulder or used to display your favorite figures. Action Figures sold separately.



STAR WARS® AND DARTH VADER® COLLECTOR CASES

The 24-piece Collector's Case has new poster-like front with exciting scenes from **RETURN OF THE JEDI**. Holds up to 24 Action Figures. Flip storage tray to make display stand. The **DARTH VADER** 15¾" case holds up to 31 Action Figures and has a chamber for accessories. Both cases include a photograph of all 65 Action Figures plus pressure sensitive label sheets. Action Figures sold separately.





ACTION FIGURE ACCESSORIES

Made for realistic battle action play! Starting with The **VEHICLE MAINTENANCE ENERGIZER** (1), used to repair ships damaged by enemy fire! Comes with 8 hydrospanners, 2 hoses with suction cups and readout cylinder.

The **TRI-POD CANNON** (2) comes with "energizer" unit and hose, has movable tripods, and a cannon that turns and tilts.

The **BATTLE ACTION RADAR LASER CANNON** (3) swivels, turns, clicks, and even "explodes" into 4 pieces. Each accessory sold separately. Action Figures sold separately.



MINI-RIGS™ VEHICLES

Now there are 2 great new vehicles in the **MINI-RIGS** collection... **AST-5** (1), an awesome "anti-gravity" vehicle with movable laser cannons and used by forces of **JABBA THE HUTT** to guard his castle; and **ISP-6** (2), to provide fast transport for the Imperial forces to all their bases of operation. Its rear window and movable wing cannons are indispensable against the Rebel attacks. Both vehicles hold one Action Figure. Also included are the old favorites... **CAP-2** (3), from the Empire to capture Rebels; **INT-4** (4), to fly short missions; **MTV-7** (5), with spring-loaded legs and cannon and **MLC-3** (6), the mobile laser cannon. All vehicles hold most Action Figures. All vehicles and Action Figures sold separately. Pat. Pending.



SPEEDER BIKE™ VEHICLE

A perfect replica of the **SPEEDER BIKE** ridden by the Imperial Scouts on **ENDOR** in **RETURN OF THE JEDI**. The **SPEEDER BIKE** holds one Action Figure on its seat and features rear brake flaps and movable foot pedals. Explosive "battle action damage" is activated by pushing a button. Action Figures sold separately.

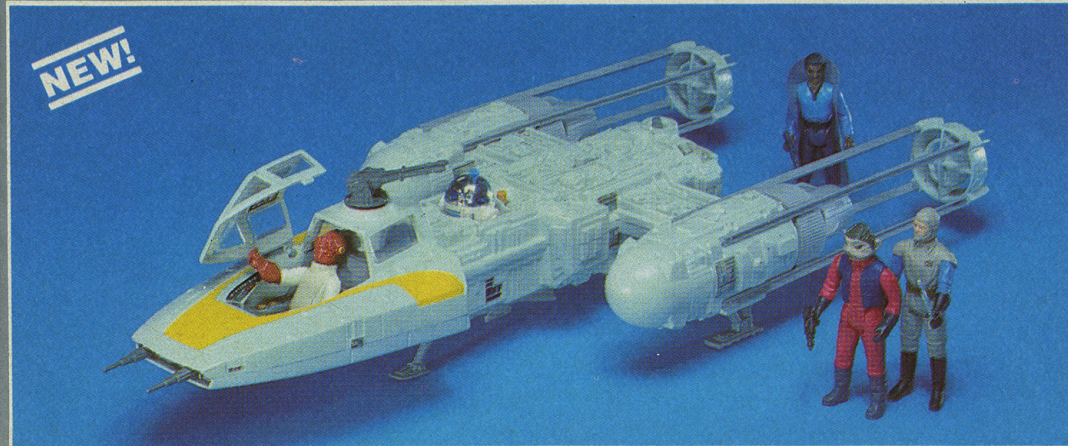




JABBA THE HUTT™ ACTION PLAYSET

Imagine if you will... the most ominous creature in existence. Now imagine that this creature is the ruthless leader of the most dangerous cut throats in the galaxies. One look into his glassy eyes and kids will know—**JABBA THE HUTT** means business. When the head of this footless creature moves, his large menacing tail swishes slowly from side to side. He sits high atop a prison platform so he can watch his victims beg for mercy. The prison holds up to seven **STAR WARS** Action Figures, has doors that open and close with a flick of a switch. And, as if that isn't enough, there's a slave rope to hold even more of his captives.

JABBA THE HUTT and his pet, **SALACIOUS CRUMB**, sit and wait... impatiently... to see who will become the next prisoner. Action Figures sold separately.



Y-WING FIGHTER™ VEHICLE

A new addition to the fighting Rebel force from **RETURN OF THE JEDI**. Our **Y-WING FIGHTER** is an authentic replica with a cockpit that holds one **STAR WARS** Action Figure and a button that activates battery-operated laser cannons and sounds. Our ship also features a manually activated bomb and retractable landing pads. Also has a compartment for **R2-D2**. Action Figures sold separately. Two "C" batteries not included. Ages 4 and up.



1. AT-AT (IMPERIAL ALL TERRAIN ARMORED TRANSPORT)™ VEHICLE

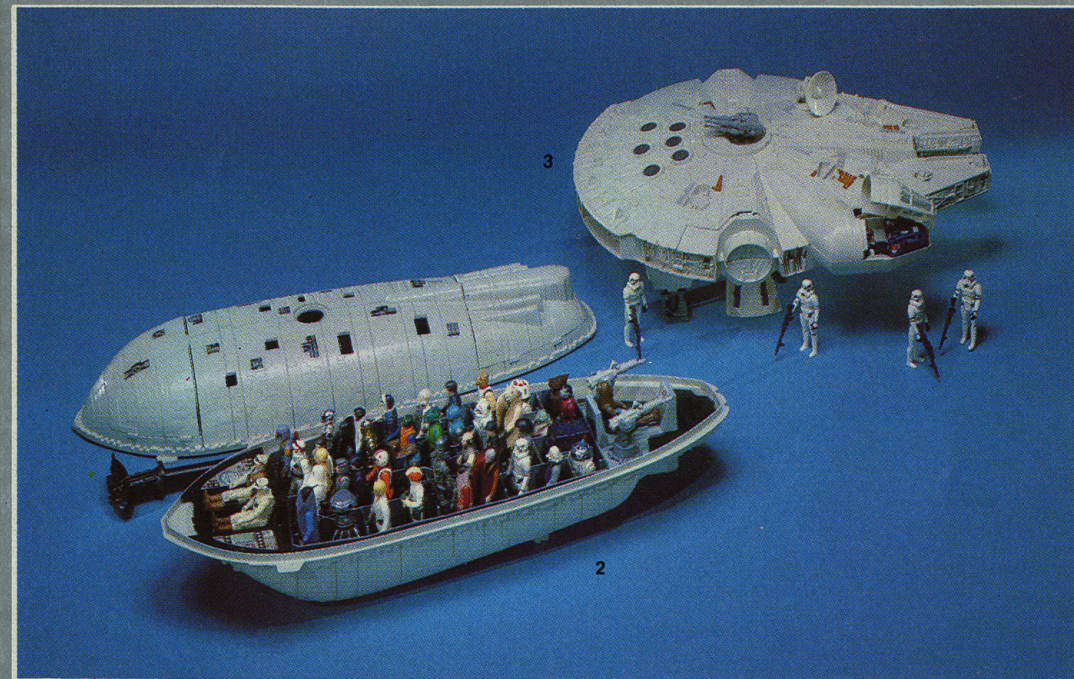
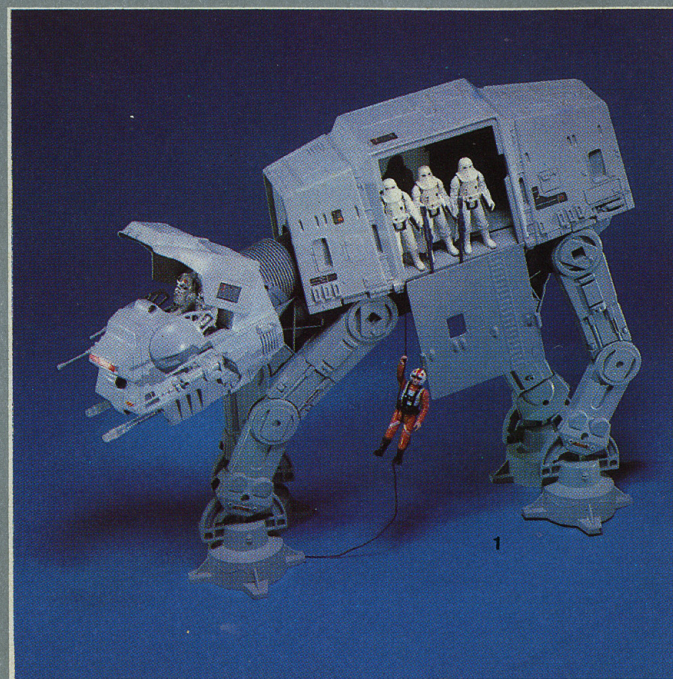
AT-AT is 17½" tall and 22" long with movable legs. A lever makes head move. Push a button and laser cannons pulsate and light up! It also comes with 10 accessories and the cockpit holds two Action Figures, sold separately. Two "D" batteries not included. Pat. No. D266,777.

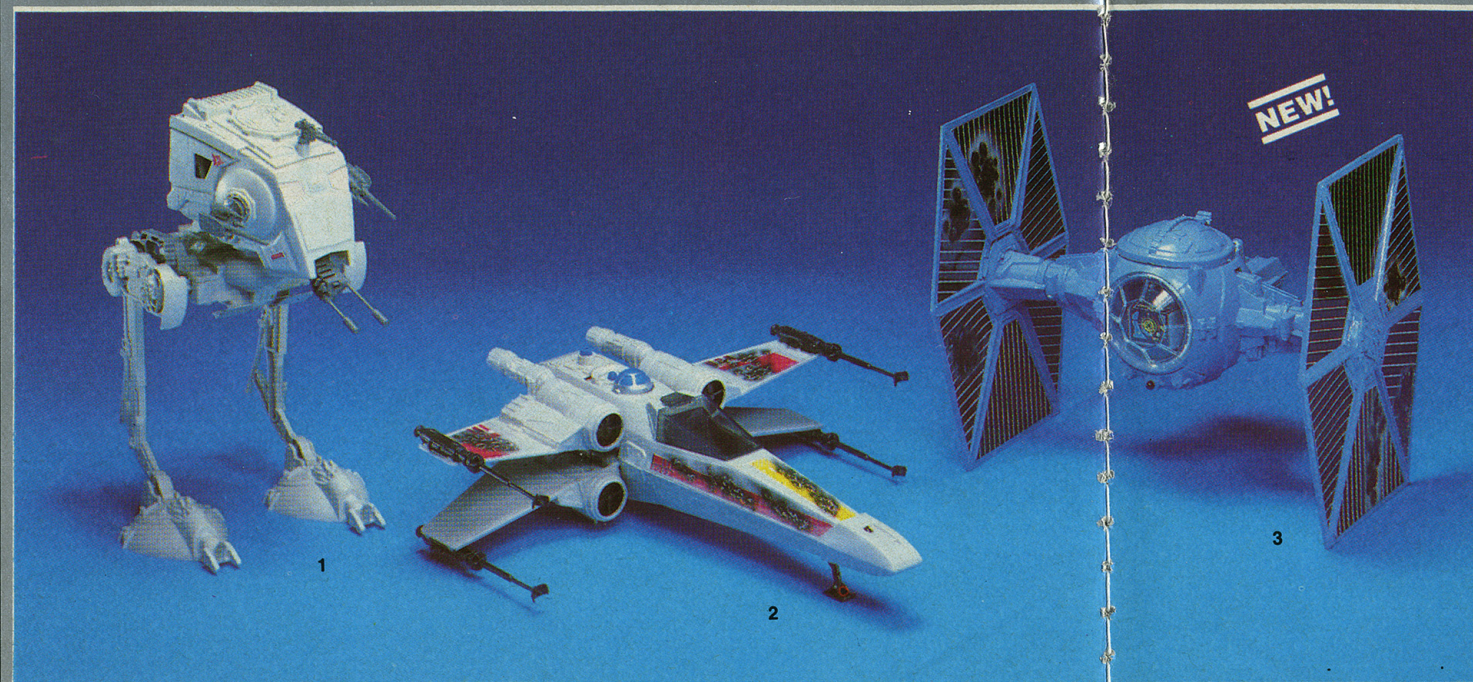
2. REBEL TRANSPORT™ VEHICLE

Front and back hatches come off to expose cockpit and clicking cannons. Cannons are removable. Top comes off... inside there's a crew chamber, removable escape hatch and a secret compartment with 5 backpacks and 4 gas masks. Patent Pending. Assembly required. Action Figures sold separately.

3. MILLENNIUM FALCON® VEHICLE

Features a "battle alert" sound, laser gun with turret chair which holds an Action Figure, a cockpit for 2 Action Figures, a radar dish and an interior play environment with secret compartment. Two "C" batteries not included. Assembly required. Action Figures sold separately.





1. SCOUT WALKER™ VEHICLE

Another EMPIRE attack vehicle to be used against the Rebels. **SCOUT WALKER** swivels to locate enemies, side cannons turn and click, and there's room inside for an Action Figure. Push button to make legs move and attack Rebel defenses. **SCOUT WALKER** stands unassisted. Action Figures sold separately.

2. X-WING FIGHTER® VEHICLE

Featuring "battle-damage". The favorite fighting ship of **LUKE SKYWALKER**. Now two sheets of self-sticking labels let kids have an **X-WING FIGHTER** that looks "brand new", then permanently change it to "BATTLE-DAMAGED"! Push the simulated **R2-D2** and the wings open to the attack position. **X-WING FIGHTER** also features a movable front landing gear and laser lights and sounds. Two "AA" batteries not included. Action Figures sold separately. Pat. No. D254,080.

3. "BATTLE-DAMAGED" IMPERIAL TIE FIGHTER® VEHICLE

The **STAR WARS IMPERIAL TIE FIGHTER** is ready to destroy the **REBEL ALLIANCE**. This dramatic reproduction of an Imperial space vehicle is now better than ever. Two sheets of self-sticking labels let kids choose between an **IMPERIAL TIE FIGHTER** that looks "brand new" or "battle-damaged". A special button releases the solar panels on either side of the cockpit to simulate a hit by an asteroid. Manually operated lever raises seat and escape hatch to allow child to seat **IMPERIAL COMMANDER** and most other **STAR WARS** Action Figures: Push the rear deck button and a dramatic red laser cannon lights up and emits a whining laser-like sound. Two "AA" batteries not included. Action Figures sold separately. Pat. No. D254,081.





EWOK VILLAGE™ PLAYSET

Straight from the Moon of **ENDOR** in **RETURN OF THE JEDI**, this playset village of the **EWOK** creatures features 3 huts and a manually rope-operated net trap to capture the Rebel Strike Team. There's also a vine elevator, a litter used to carry **C-3PO** and a campfire with a spit. It's definitely an action-packed addition to the **STAR WARS** collection. Assembly required. Action Figures sold separately.

STAR WARS: RETURN OF THE JEDI™ EWOK™ STUFFED FIGURES

You've never seen anything like it before! Coming soon!

EWOK Stuffed Figures.

They appear to be a cross between a **JAWA** and a **WOOKIEE**.

EWOK Stuffed Figures.

The most adorable, huggable, squeezable characters in the **STAR WARS** galaxy.

EWOK Stuffed Figures.

WICKET W. WARRICK! A budding 14 inches! **WILEY** the **EWOK** and **NIPPET** the **EWOK!** Both 8 inches. All three are cuddly and lovable.

EWOK Stuffed Figures.

A child's best friend! Forever!
For boys and girls.

NEW!

Due to the secrecy of these characters in "RETURN OF THE JEDI"™, we are unable to visually display the toy counterpart until the film release.



STAR WARS VISUAL GUIDES
WWW.JEDITEMPLEARCHIVES.COM



1. STAR WARS® COLORING BOOK

64 pages filled with exciting scenes from the **STAR WARS** movie, **RETURN OF THE JEDI**. Two different books for boys and girls. Ages 3 and up.

2. THE JABBA THE HUTT™ PLAY-DOH® PLAYSET

Complete set includes molds to make detailed figures of **LUKE**

SKYWALKER, **PRINCESS LEIA ORGANA**, **JABBA THE HUTT**, and 5 other characters, a playmat depicting the **JABBA THE HUTT** Castle, and a plastic vehicle from the new movie in which the characters can ride. Three 6 oz. cans of **PLAY-DOH** Modeling Compound, and roller.

3. "THE FORCE"™ LIGHTSABER™ ACCESSORY

Has a long, sturdy plastic shaft

and highly detailed base. Create different sounds by moving "**THE FORCE**" **LIGHTSABER** at various speeds. No batteries needed. Pat. No. D256.485

4. LASER PISTOL™ ACCESSORY

Authentic **STAR WARS** styling. "Action" on/off button energizes gun's motor. Trigger activates a 2-speed laser sound. Two "C" batteries not included.

STAR MICRO COLLECTION WARS™

A dramatic world of interconnecting playsets and vehicles. From the worlds of **BESPIN**, **HOTH** and **DEATH STAR**. All scaled down to a smaller size. All packed with dynamic action features. And all including perfectly detailed and unique die cast figures. All that adds up to more exciting play possibilities than ever for every **STAR WARS** fan!

- Dramatic play features.
- You can even connect playsets from the same worlds together.
- 66 die cast figures... each is different... and they come with playsets and vehicles.

™ Trademark of CPG Products Corp. TM, ® & © Lucasfilm Ltd. (LFL) 1983
All rights reserved. Trademarks, including **STAR WARS** and Design, used by Kenner Products under authorization.



STAR WARS VISUAL GUIDES
WWW.JEDITEMPLEARCHIVES.COM



1. IMPERIAL TIE FIGHTER® VEHICLE

It has perfect detail and was used by the evil EMPIRE! Pretend to "crash" into asteroids or any flat surface and it breaks apart into 4 pieces. Reassembly is fast and easy because all parts are connected by a cord. Also included is a unique die cast **IMPERIAL TIE FIGHTER** Pilot that fits in the cockpit!
Pat. No. D254,081.

2. X-WING FIGHTER® VEHICLE

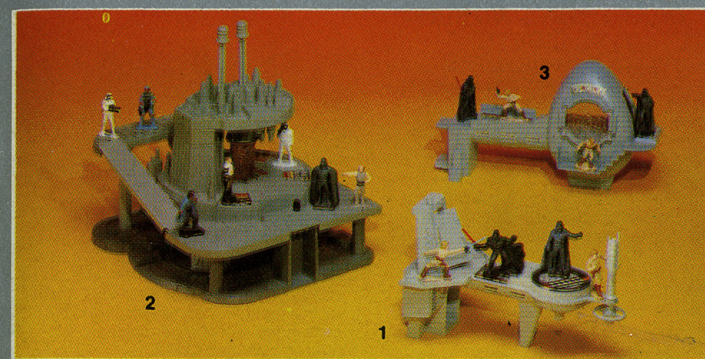
One of the toughest Rebel fighters in the galaxy! Pretend to "crash" on **DAGOBAH** or any flat surface. It breaks apart into 3 pieces! Reassembly is fast and easy because the parts are connected with a cord. Included is a unique die cast Pilot that fits in the cockpit.
Pat. No. D254,080.

3. REBEL ARMORED SNOWSPEEDER® VEHICLE

It speeds to the rescue across the ice planet **HOTH**. **SNOWSPEEDER** cockpit opens and holds two die cast figures back-to-back. One steers while the other mans the movable harpoon gun. Includes two unique die cast figures.
Pat. No. D267,025.

4. MILLENNIUM FALCON® VEHICLE

Here's where the action began for **HAN SOLO** and **CHEWIE**. The **REBEL ALLIANCE** depends on them! Vehicle includes your favorite features scaled to collectible size... adds another great dimension to **STAR WARS** fun! Includes six unique die cast figures.



1. BESPIN™ GANTRY ACTION PLAYSET

DARTH VADER and **LUKE SKYWALKER** duel. A manually-operated Gantry door opens and leads to a rotatable platform to recreate the **LIGHTSABER** combat between **DARTH VADER** and **LUKE SKYWALKER**. **BESPIN** Gantry comes with 4 unique die cast figures in action poses. **BESPIN** Gantry also connects to other **BESPIN** Playsets.

2. BESPIN™ FREEZE CHAMBER ACTION PLAYSET

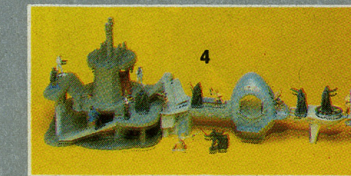
HAN SOLO gets frozen! A special platform lowers a figure into the chamber—then turn the action lever and raise a totally different "frozen" figure out with the lifting claw! Playset also has a movable ramp and stairs, an elevator, plus a secret escape hatch to help your figures escape freezing.

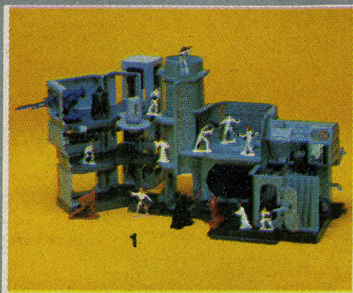
3. BESPIN™ CONTROL ROOM ACTION PLAYSET

The duel continues! **DARTH VADER** can stalk **LUKE SKYWALKER** through the Control Room—then send him crashing through the "break away" window with the manually-operated lever and special platform. Playset comes with 4 unique die cast figures in action poses. **BESPIN** Control Room connects to other **BESPIN** Playsets.

4. BESPIN™ WORLD ACTION PLAYSET

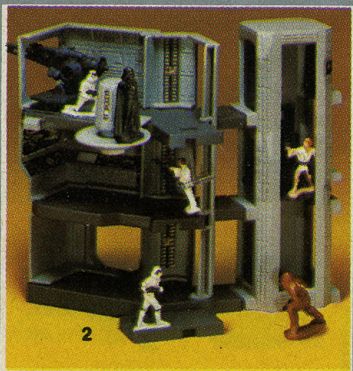
Three playsets in one: **BESPIN** Control Room, **BESPIN** Gantry and **BESPIN** Freeze Chamber, all loaded with action features and come with 16 die cast figures in action poses. All three **BESPIN** Playsets can connect lots of ways to create one dynamic environment—or set them up separately.





1. DEATH STAR® WORLD ACTION PLAYSETS

Two **DEATH STAR** Playsets that can connect in a number of ways to create a different looking environment every time...or you can play with them separately. **DEATH STAR** Trash Compactor and **DEATH STAR** Escape Action Playsets are packed with action features and come with 14 die cast figures set in action poses!



2. DEATH STAR® ESCAPE ACTION PLAYSET

The Rebels must escape! In this Action Playset kids can pretend that their heroes swing on a rope to safety while bridges and elevators disappear from under their feet, and a clicking laser cannon explodes by their sides. Six unique die cast figures including **LUKE SKYWALKER** and **DARTH VADER**.

3. DEATH STAR® COMPACTOR ACTION PLAYSET

Kids will love to recreate such memorable movie scenes. When our heroes thought they were goners—blast doors open, and they jump into the trash compactor. The walls close in on them, a tight squeeze but...at the last second, an escape hatch opens. They get out...and leap into a nearby movable elevator for safety. Eight action-posed die cast figures in this playset.



1. HOTH™ ION CANNON ACTION PLAYSET

The Ion Cannon is operated by a lever and clicks to simulate firing! Other features include an observation tower which holds a figure and operates blast door, a command post with two computer terminals and a "battle-damage" feature activated by pressing a button. Set includes 8 unique die cast figures set in action poses. **HOTH** Ion Cannon Playset connects to other **HOTH** Playsets.

2. HOTH™ TURRET DEFENSE ACTION PLAYSET

This Action Playset has two "exploding" gun turrets on a realistic snow base. The turrets click when turned and have opening hatches for figures. It also comes with 6 unique die cast figures set in action poses. **HOTH** Turret Defense Action Playset connects to other **HOTH** Playsets. Assembly required.

3. HOTH WAMPA™ CAVE ACTION PLAYSET

This playset recreates the capture of **LUKE SKYWALKER** by **HOTH WAMPA**, the snow monster, plus **HAN SOLO** and **CHEWBACCA** destroying **PROBOT**. It has an "action launcher" and 4 unique die cast figures set in action poses! **HOTH WAMPA** Cave Action Playset can connect to other **HOTH** Playsets.

4. HOTH™ GENERATOR ATTACK ACTION PLAYSET

This playset comes with an "exploding" generator and a **SCOUT WALKER** that stands unassisted and by pressing a button, it "blows apart" when positioned on the highly detailed snow base! Set includes 6 unique die cast figures. **HOTH** Generator Attack Playset connects to other **HOTH** Playsets.





5. HOTH™ WORLD ACTION PLAYSET

Three playsets in one: **HOTH WAMPA** Cave, **HOTH** Generator Attack, and **HOTH** Ion Cannon. Comes with 19 die cast figures set in action poses. Playset can be connected to make one super play environment or played with separately.

JOIN THE OFFICIAL STAR WARS® FAN CLUB



A skiff carrying **LUKE**, **HAN** and **CHEWBACCA** as prisoners, hovers in front of **JABBA'S SAIL BARGE** on the desert planet **TATOOINE**.

Get involved! Be a part of the **STAR WARS** Saga. Here's what you receive with a year's membership in the Official **STAR WARS** Fan Club:

A BEAUTIFUL "RETURN OF THE JEDI" MEMBERSHIP KIT ESPECIALLY PREPARED FOR OSWFC MEMBERS

Exclusive **JEDI** "Battle Scene" color poster • 6—8" x 10" color photos of your favorite **STAR WARS** characters • **JEDI** logo patch, (2½" by 4¼") • Cast and Crew "**YODA**" decal • **JEDI** membership card, and...

A SUBSCRIPTION TO "BANTHA TRACKS", THE CLUB'S OFFICIAL NEWSLETTER.

Read four issues throughout the year and get the "inside scoop" on the **STAR WARS** Saga, and information on upcoming Lucasfilm Ltd. Productions

See back page for application.

PARTICIPATE IN SPECIAL CLUB-SPONSORED CONTESTS
PURCHASE GENUINE COLLECTOR'S ITEMS
UTILIZE THE QUESTION AND ANSWER SERVICE

BECOME AN OFFICIAL **STAR WARS** PEN PAL and more...
Remember, **THE FORCE** will be with you!

OFFICIAL STAR WARS® FAN CLUB MEMBERSHIP APPLICATION FORM

Please mail this application form along with \$6.00 (\$7.00 Canadian, \$8.00 Foreign—U.S. drafts or money orders only) to:

OFFICIAL STAR WARS FAN CLUB
P.O. BOX 2202, DEPT. N2
SAN RAFAEL, CA 94912 U.S.A.

Name _____ Age _____
(please print)

Address _____

City _____ State _____

Country _____ Zip/Postal Code _____

Please send checks or money orders—NO CASH. Allow 4-8 weeks for delivery of membership kit. **BANTHA TRACKS** is published during the months of February, May, August and November.

TM, ® & © Lucasfilm Ltd. (LFL) 1983
ALL RIGHTS RESERVED
Satisfaction Guaranteed

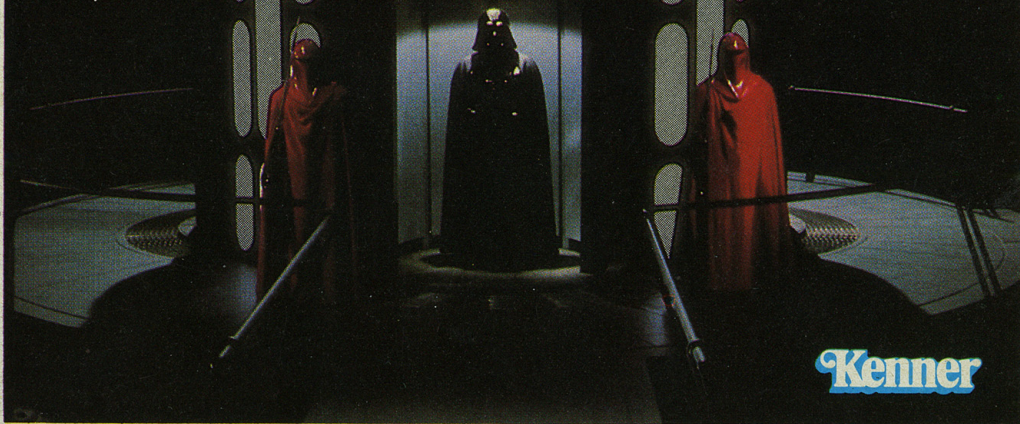
For information on toys write to:
KENNER PRODUCTS
1014 VINE STREET
CINCINNATI, OHIO 45202
Attn: Consumer Relations



STAR WARS VISUAL GUIDES
WWW.JEDITEMPLEARCHIVES.COM

STAR WARS RETURN OF THE JEDI

TM



Kenner

© CPG Products Corp. by its Division Kenner Products, Cincinnati, Ohio 45202

175-017-01



STAR WARS VISUAL GUIDES
WWW.JEDITEMPLEARCHIVES.COM