

Return of the Jedi "Collections" (Jabba the Hutt) Toy Catalog (1984)



NEW!



STAR WARS® ACTION FIGURES

Now there are 77 STAR WARS Action Figures! All ready to conquer and defend the galaxy!

Featuring 12 new STAR WARS Action Figures from the greatest movie blockbuster of them all, STAR WARS: RETURN OF THE JEDI. Watch for WICKET W. WARRICK, TEEBO and other favorite EWOKS from ENDOR. There's the diabolical character, THE EMPEROR, and the human RANCOR KEEPER. Plus KLAATU (in Skiff Guard™ Outfit), NIKTO, PRUNE FACE, AT-ST DRIVER, B-WING PILOT and the infamous 8D8 (Torture Droid). Not to mention favorites like HAN SOLO (in Trench Coat), PRINCESS LEIA (in Combat Poncho), and many more. 77 Action Figures in all... including the favorites DARTH VADER, C-3PO, R2-D2, and CHEWBACCA.

©, TM, & © Lucasfilm, Ltd. (LFL) 1984
All rights reserved
Kenner Products, A Division of CPG
Products Corp., Authorized User



STAR WARS VISUAL GUIDES
WWW.JEDITEMPLEARCHIVES.COM

1. Nikto™
2. Klaatu™ (In Skiff Guard™ Outfit)
3. B-Wing Pilot™
4. Han Solo™ (Trench Coat)
5. Teebo™
6. AT-ST Driver™
7. Prune Face™
8. Wicket W. Warrick™
9. The Emperor™
10. Rancor Keeper™
11. Princess Leia Organa® (In Combat Poncho)
12. 8D8™
13. Bib Fortuna™
14. Ree-Yees™
15. Weequay™
16. Emperor's Royal Guard™
17. Chief Chirpa™
18. Lando Calrissian™ (Skiff Guard™ Disguise)
19. Luke Skywalker® (Jedi Knight® Outfit)
20. Boushh™
21. Logray™ (Ewok™ Medicine Man)
22. Squid Head™
23. Klaatu™
24. Gamorrean Guard™
25. Imperial Stormtrooper® (Hoth™ Battle Gear)
26. Princess Leia Organa® (Bespin™ Gown)

27. Imperial Commander™
28. Cloud Car™ Pilot
29. Bespin™ Security Guard
30. 4-LOM™
31. Zuckuss®
32. Imperial TIE Fighter® Pilot
33. General Madine™
34. Nien Nunb™
35. Rebel Commando™
36. Biker Scout™
37. Admiral Ackbar™
38. Luke Skywalker® (Hoth™ Battle Gear)
39. Bespin™ Security Guard
40. Arfive-Defour (R5-D4)®
41. Princess Leia Organa® (Hoth™ Outfit)
42. Yoda, the Jedi Master™
43. Han Solo™ (Hoth™ Battle Gear)
44. Chewbacca®
45. Lando Calrissian™
46. Artoo-DeToo (R2-D2)® with Sensorscope™
47. See-Threepio (C-3PO)® (with removable limbs)
48. Luke Skywalker® (Bespin™ Fatigues)
49. AT-AT™ Driver
50. AT-AT™ Commander

51. Ugnaught®
52. IG-88®
53. Two-Onebee (2-1B)®
54. Snaggletooth®
55. Rebel Commander™
56. Han Solo™
57. Boba Fett®
58. Jawa®
59. Darth Vader®
60. Ben (Obi-Wan) Kenobi®
61. Luke Skywalker®
62. Han Solo™ (Bespin™ Outfit)
63. Princess Leia Organa®
64. FX-7®
65. Death Star® Droid
66. Walrus Man®
67. Rebel Soldier™
68. Tusken Raider® (Sand People)®
69. Star Destroyer® Commander
70. Hammerhead®
71. Power Droid™
72. Luke Skywalker® (X-Wing Fighter® Pilot)
73. Dengar®
74. Greedo®
75. Bossk® (Bounty Hunter)
76. Lobot™
77. Imperial Stormtrooper® (Original)



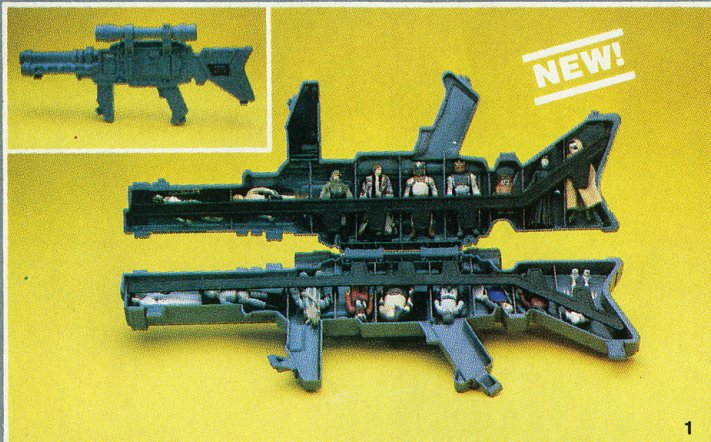
SY SNOOTLES AND THE REBO BAND™ ACTION FIGURES

It's SY SNOOTLES AND THE REBO BAND™ Action Figures. The hottest combo since the CANTINA™ Creature Band!

SY SNOOTLES and the band really kept "things" jumpin' in JABBA THE HUTT's Palace. And now all 3 Action Figures with their musical accessories are here! SY SNOOTLES, the lead singer, with microphone, DROOPY MCCOOL, wind instrument player, and the one and only MAX REBO, at the organ. All fully articulated and ready to play all night.



STAR WARS VISUAL GUIDES
WWW.JEDITEMPLEARCHIVES.COM



COLLECTOR CASES

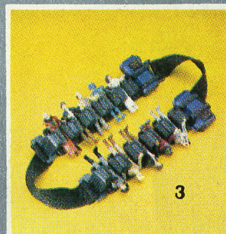
STAR WARS® LASER RIFLE™ CASE (1)
Brand new! This LASER RIFLE has a "telescopic sight" for tracking the enemy. It even has a compartment to store accessories and holds up to 17 STAR WARS Action Figures. Action Figures sold separately. Ages 4 and up.

C-3PO® COLLECTOR'S CASE (2)
Life-size golden sculpting of the world's most popular droid, C-3PO. The new C-3PO Collector's Case holds up to 40 STAR WARS Action Figures plus accessories. Close it up and the hidden handle allows a child to carry C-3PO anywhere. Ages 4 and up.

CHEWBACCA® BANDOLIER STRAP (3)
Looks just like the ammunition strap owned by CHEWIE. It carries 10 Action Figures and has two pouches for accessories and secret messages. It can be worn over the shoulder or used to display your favorite figures. Action Figures sold separately.

STAR WARS® AND DARTH VADER® COLLECTOR CASES (4)

The 24-piece Collector's Case has a front showing exciting scenes from RETURN OF THE JEDI. Holds up to 24 Action Figures. Flip storage tray to make display stand. The DARTH VADER 15¾" case holds up to 31 Action Figures. Ages 4 and up.



EWOK™ ASSAULT CATAPULT ACCESSORY

NEW! EWOK Assault Catapult is a working replica of the catapult used by the EWOKS against THE EMPIRE on ENDOR. This catapult can fire 2 plastic boulders, and there's even a special crank for controlling distance. What a way to "knock out" the IMPERIAL FORCES. 2 "boulders" included.

EWOK™ COMBAT GLIDER VEHICLE

It's a realistic model of the same EWOK Combat Glider everyone remembers in the movie STAR WARS: RETURN OF THE JEDI. And just like in the movie, our Combat Glider features an adjustable harness for most Action Figures (not included) and an action lever



designed to drop "boulders" on the enemy! 2 "boulders" included.

ACTION FIGURE ACCESSORIES

Made for realistic battle action play! Starting with the **VEHICLE MAINTENANCE ENERGIZER (1)**, used to repair ships damaged by enemy fire! Comes with 8 hydrosplanners, 2 hoses with suction cups and readout cylinder.

The **TRI-POD CANNON (2)** comes with "energizer" unit and hose, has movable tripods, and a cannon that turns and tilts.

The **RADAR LASER CANNON (3)** swivels, turns, clicks, and even "explodes" into 4 pieces. Each accessory sold separately. Action Figures sold separately.





MINI-RIG™ VEHICLES

DESERT SAIL SKIFF™ (1) vehicle is a unique flying craft similar to the one used to carry LUKE SKYWALKER to the SARLACC PIT. It features a revolving cockpit that holds one STAR WARS Action Figure, rear movable fins, rotating laser cannon and an adjustable sail. There's a manually operated gangplank so that any Action Figure can be fed to the ferocious SARLACC.

ENDOR FOREST RANGER™ (2) vehicle is designed for maneuvering through the heavily wooded forests of ENDOR. Its unique gravity-controlled cockpit holds one STAR WARS Action Figure so, even if you "fly" the ENDOR FOREST RANGER upside-down, the cockpit (and the Action Figure you put inside it) will always be "right side up". The ENDOR FOREST RANGER also has manually operated landing gear and laser cannon wings that spin for spiraling firing action.

ISP-6 (3) provides fast transport for the Imperial forces to all their bases of operation. Its rear-view window and movable wing cannons are indispensable against REBEL attack. **AST-5 (4)** is an awesome "anti-gravity" vehicle with movable laser cannons and used by the forces of JABBA THE HUTT to guard his palace.

Action Figures sold separately.
Pat. Pend.

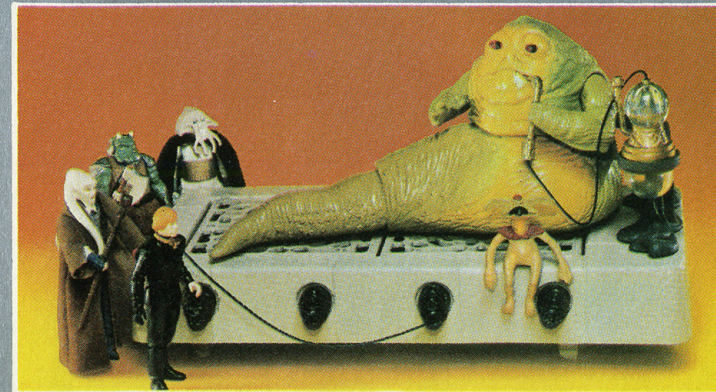
SPEEDER BIKE™ VEHICLE

A perfect replica of the SPEEDER BIKE ridden by the Imperial Scouts on ENDOR in RETURN OF THE JEDI. The SPEEDER BIKE holds one Action Figure on its seat and features rear brake flaps and movable foot pedals. Explosive "battle action damage" is activated by pushing a button. Action Figures sold separately. Pat. Pend.

JABBA THE HUTT™ ACTION PLAYSET

Imagine if you will... the most ominous creature in existence. Now imagine that this creature is the ruthless leader of the most dangerous cutthroats in the galaxies. One look into his glassy eyes and kids will know—JABBA THE HUTT means business. When the head of this footless creature moves, his large menacing tail swishes slowly from side to side. He sits high atop a prison platform so he can watch his victims beg for mercy. The prison holds up to seven STAR WARS Action Figures, has doors that open and close with a flick of a switch. And, as if that isn't enough, there's a slave rope to hold even more of his captives.

JABBA THE HUTT and his pet, SALACIOUS CRUMB, sit and wait... impatiently... to see who will become the next prisoner. Other Action Figures sold separately.





RANCOR MONSTER™ FIGURE

He's the meanest, hungriest, most horrifying monster in the whole STAR WARS saga! One wrong move could spell disaster for any REBEL who lands in the pit with the RANCOR MONSTER. Standing 9" tall he towers over every Action Figure in the collection. With his movable legs, you can make him chase GAMORREAN GUARDS. And when you activate one of the scales on his back, the RANCOR MONSTER opens his terrifying mouth. His spring-loaded arms can hold an Action Figure or viciously knock him down. Action Figures sold separately.



Actual toy not represented.
Vehicle shown from scene in
STAR WARS movie, RETURN OF THE JEDI.

TATOOINE SKIFF™ VEHICLE

Just like the vehicle that carried LUKE, HAN and CHEWIE to the brink of the SARLACC PIT, the TATOOINE SKIFF has a retractable plank that holds one Action Figure. Move the action lever, and the plank pushes the Action Figure over the side. Activate the breakaway railings. Or, launch an Action Figure over the side by activating the movable floor hatch. The TATOOINE SKIFF is so realistic, it's even got movable rear fins, lever-controlled landing pods, and a weapons storage area. Action Figures sold separately.



1. SCOUT WALKER™ VEHICLE

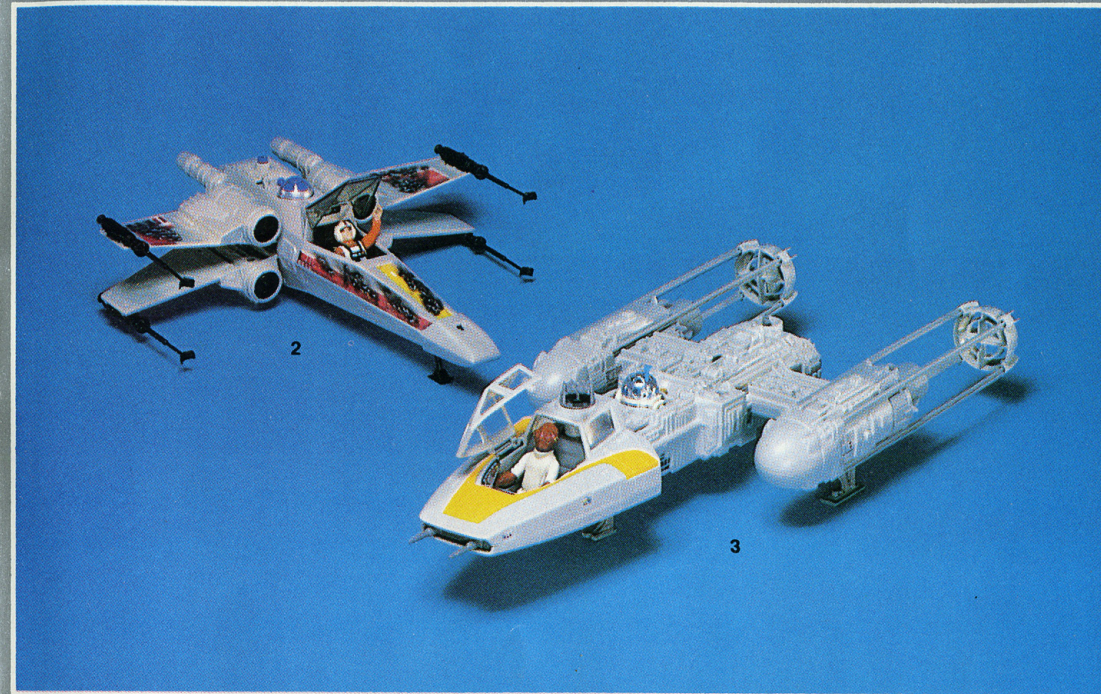
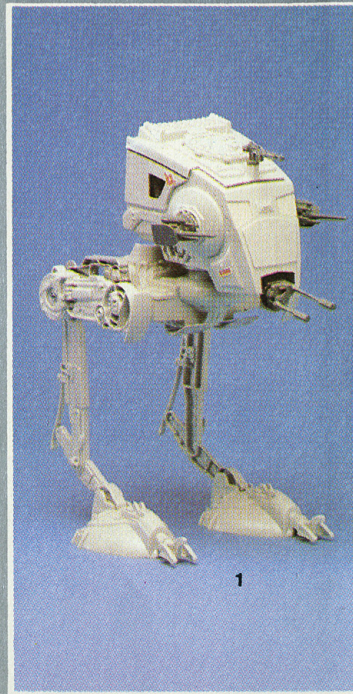
Another EMPIRE attack vehicle to be used against the REBELS on ENDOR, SCOUT WALKER vehicle swivels to locate enemies, side cannons turn and click, and there's room inside for an Action Figure. Push button to make legs move and attack REBEL defenses. SCOUT WALKER vehicle stands unassisted. Action Figures sold separately.

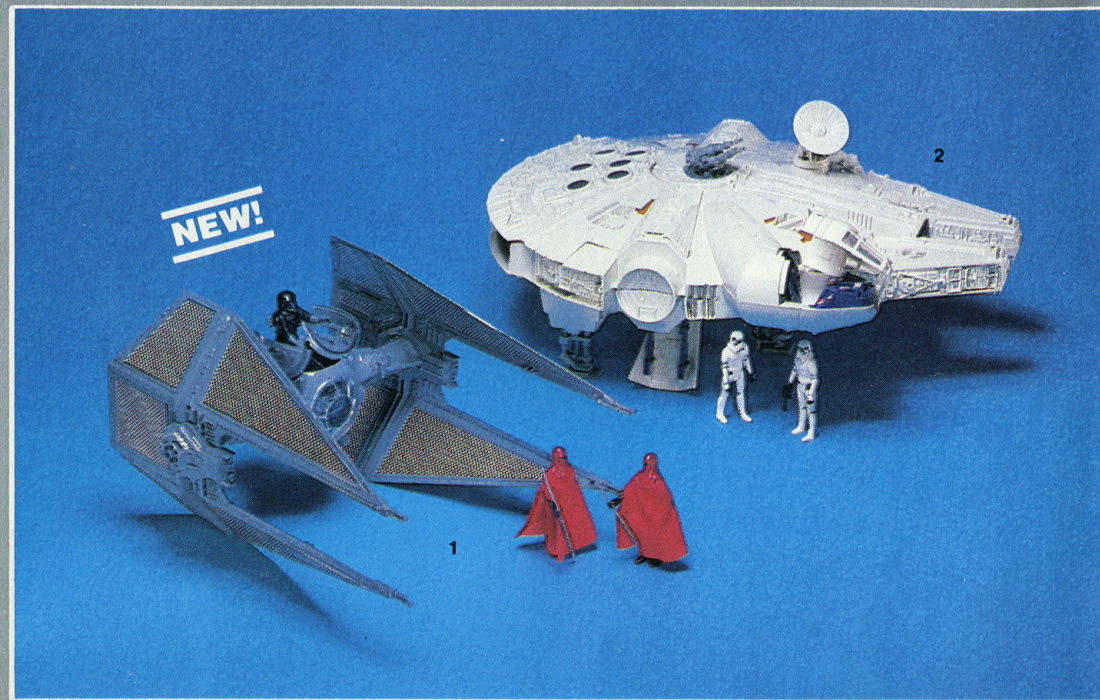
2. X-WING FIGHTER® VEHICLE

Featuring "battle-damage". The favorite fighting ship of LUKE SKYWALKER. Now two sheets of self-sticking labels let kids have an X-WING FIGHTER that looks "brand new", then permanently change it to "BATTLE-DAMAGED"! Push the simulated R2-D2 and the wings open to the attack position. X-WING FIGHTER also features a movable front landing gear and laser lights and sounds. Two "AA" batteries not included. Action Figures sold separately. Pat. No. D254,080.

3. Y-WING FIGHTER™ VEHICLE

A new addition to the fighting REBEL force from RETURN OF THE JEDI. Our Y-WING FIGHTER is an authentic replica with a cockpit that holds one STAR WARS Action Figure and a button that activates battery-operated laser cannons and sounds. Our ship also features a manually activated bomb and retractable landing pads. Also has a compartment for R2-D2. Action Figures sold separately. Two "C" batteries not included. Ages 4 and up.





1. TIE INTERCEPTOR™ VEHICLE

Look out, REBELS! Here comes one of THE EMPIRE's fastest fighter vehicles. This authentically designed TIE INTERCEPTOR has a hatch that opens to hold an IMPERIAL STORMTROOPER or any other Action Figure from the STAR WARS: RETURN OF THE JEDI collection. Realistic battle-action features include battery-operated laser cannon and sound. Press a button to eject the wings and simulate battle damage. Batteries not included. Action Figures sold separately.

2. MILLENNIUM FALCON™ VEHICLE

Features a "battle alert" sound, laser gun with turret chair which holds an Action Figure, a cockpit for 2 Action Figures, a radar dish and an interior play environment with secret compartment. Two "C" batteries not included. Assembly required. Action Figures sold separately.

3. B-WING FIGHTER™ VEHICLE

It's an authentic replica of the REBEL vehicle that fought off THE EMPIRE ships in STAR WARS: RETURN OF THE JEDI. Our B-WING FIGHTER has a unique gravity-controlled cockpit. So, even if you "fly" the B-WING upside-down, the cockpit (and the Action Figure you put inside it) will always be "right-side up". The B-WING is well equipped for battle—with laser cannons and sounds. To operate the side wings, just turn one of the rear engine pods. You can even raise and lower the landing gear. Action Figures sold separately. Patent pending.



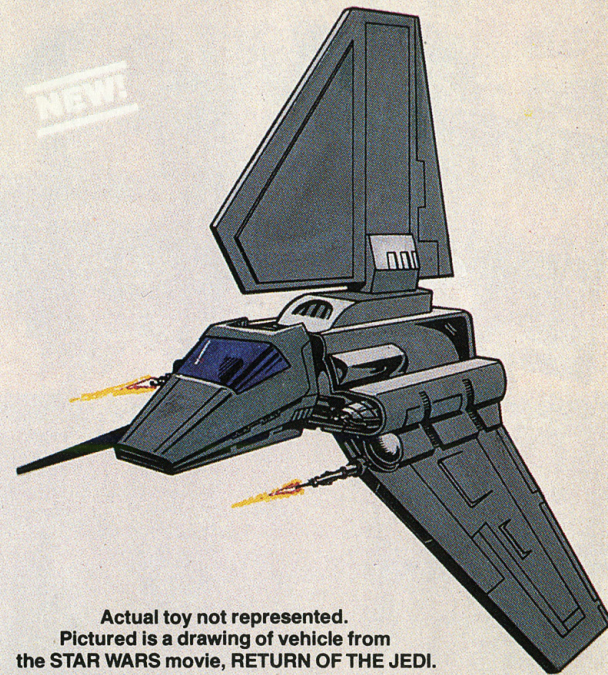


EWOK™ VILLAGE PLAYSET

Straight from the Moon of ENDOR in RETURN OF THE JEDI, this playset village of the EWOK creatures features 3 huts and a rope-operated net trap to capture the REBEL Strike Team. There's also a vine elevator, a litter used to carry C-3PO and a campfire with a spit. It's definitely an action-packed addition to the STAR WARS collection. Assembly required. Action Figures sold separately.

IMPERIAL SHUTTLE™ VEHICLE

With manually-operated wings that can be raised and lowered, our IMPERIAL SHUTTLE looks just like that of THE EMPEROR's in STAR WARS: RETURN OF THE JEDI. Lower the movable loading ramp and recreate THE EMPEROR's ominous arrival at the DEATH STAR battle station. The cockpit is big enough to hold two Action Figures. "Take off" is easy because you control the retractable rear landing gear. Best of all, the side of the vehicle pops off for easy access to the interior of the IMPERIAL SHUTTLE. Action Figures sold separately. Batteries not included.



Actual toy not represented.
Pictured is a drawing of vehicle from
the STAR WARS movie, RETURN OF THE JEDI.





1. STAR WARS® COLORING BOOK

64 pages filled with exciting scenes from the STAR WARS movie, RETURN OF THE JEDI. Two different books for boys and girls. Ages 3 and up.

2. STAR WARS: RETURN OF THE JEDI™ PLAY-DOH® PLAYSET

Complete set includes molds to make detailed figures of LUKE SKYWALKER, PRINCESS LEIA

ORGANA, JABBA THE HUTT, and 5 other characters, a playmat depicting the JABBA THE HUTT Castle, and a plastic vehicle from the new movie in which the characters can ride. Three 6 oz. cans of PLAY-DOH Modeling Compounds, and roller.

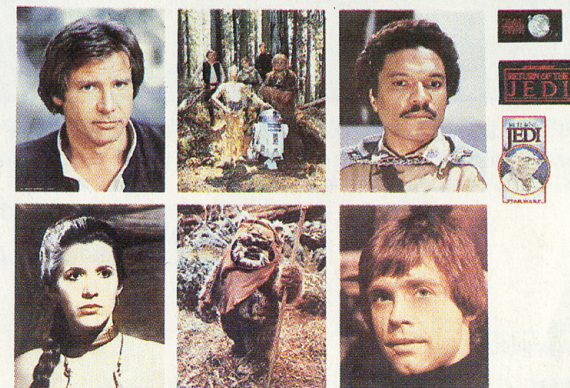
3. "THE FORCE" LIGHTSABER™ ACCESSORY

Has a long, sturdy plastic shaft and highly detailed base. Create different sounds by moving "THE FORCE"

LIGHTSABER at various speeds. No batteries needed. Pat. No. D256,485.

4. BIKER SCOUT LASER PISTOL™ ACCESSORY

Styled after the "real" weapons seen in STAR WARS: RETURN OF THE JEDI, this BIKER SCOUT LASER PISTOL features "telescopic" sights with a red filter and "cross hairs" for zeroing in on your "target", a movable trigger and pulsating laser sounds when fired. Two "C" batteries not included.



JOIN THE OFFICIAL STAR WARS® FAN CLUB

Get involved! Be a part of the STAR WARS Saga. Here's what you receive with a year's membership in the Official STAR WARS Fan Club:

A BEAUTIFUL "RETURN OF THE JEDI" MEMBERSHIP KIT ESPECIALLY PREPARED FOR OSWFC MEMBERS

Exclusive JEDI "Battle Scene" color poster • 6—8" x 10" color photos of your favorite STAR WARS characters • JEDI logo patch, (2½" by 4¼") • Cast and Crew "YODA" decal • JEDI membership card, and...

A SUBSCRIPTION TO "BANTHA TRACKS", THE CLUB'S OFFICIAL NEWSLETTER.

Read four issues throughout the year and get the "inside scoop" on the STAR WARS Saga, and information on upcoming Lucasfilm Ltd. Productions.

See back cover for application.



STAR WARS VISUAL GUIDES
WWW.JEDITEMPLEARCHIVES.COM

PARTICIPATE IN SPECIAL CLUB-SPONSORED
CONTESTS
PURCHASE GENUINE COLLECTOR'S ITEMS
UTILIZE THE QUESTION AND ANSWER SERVICE

BECOME AN OFFICIAL STAR WARS PEN PAL and
more...
Remember, THE FORCE will be with you! Always...

OFFICIAL STAR WARS® FAN CLUB MEMBERSHIP APPLICATION FORM

Please mail this application form along with \$6.00 (\$7.00 Canadian, \$8.00 Foreign—
U.S. drafts or money orders only) to:

**OFFICIAL STAR WARS FAN CLUB
P.O. BOX 2202, DEPT. N2
SAN RAFAEL, CA 94912 U.S.A.**

Name _____ Age _____
(please print)

Address _____

City _____ State _____

Country _____ Zip/Postal Code _____

Please send checks or money orders—NO CASH. Allow 4-8 weeks for delivery of
membership kit. BANTHA TRACKS is published during the months of February,
May, August and November.

® , TM & © Lucasfilm Ltd. (LFL) 1983.
ALL RIGHTS RESERVED
Satisfaction Guaranteed

For STAR WARS toy related inquiries write to:
KENNER PRODUCTS
1014 VINE STREET
CINCINNATI, OHIO 45202
Attn: Consumer
Relations

76719000



STAR WARS VISUAL GUIDES
WWW.JEDITEMPLEARCHIVES.COM